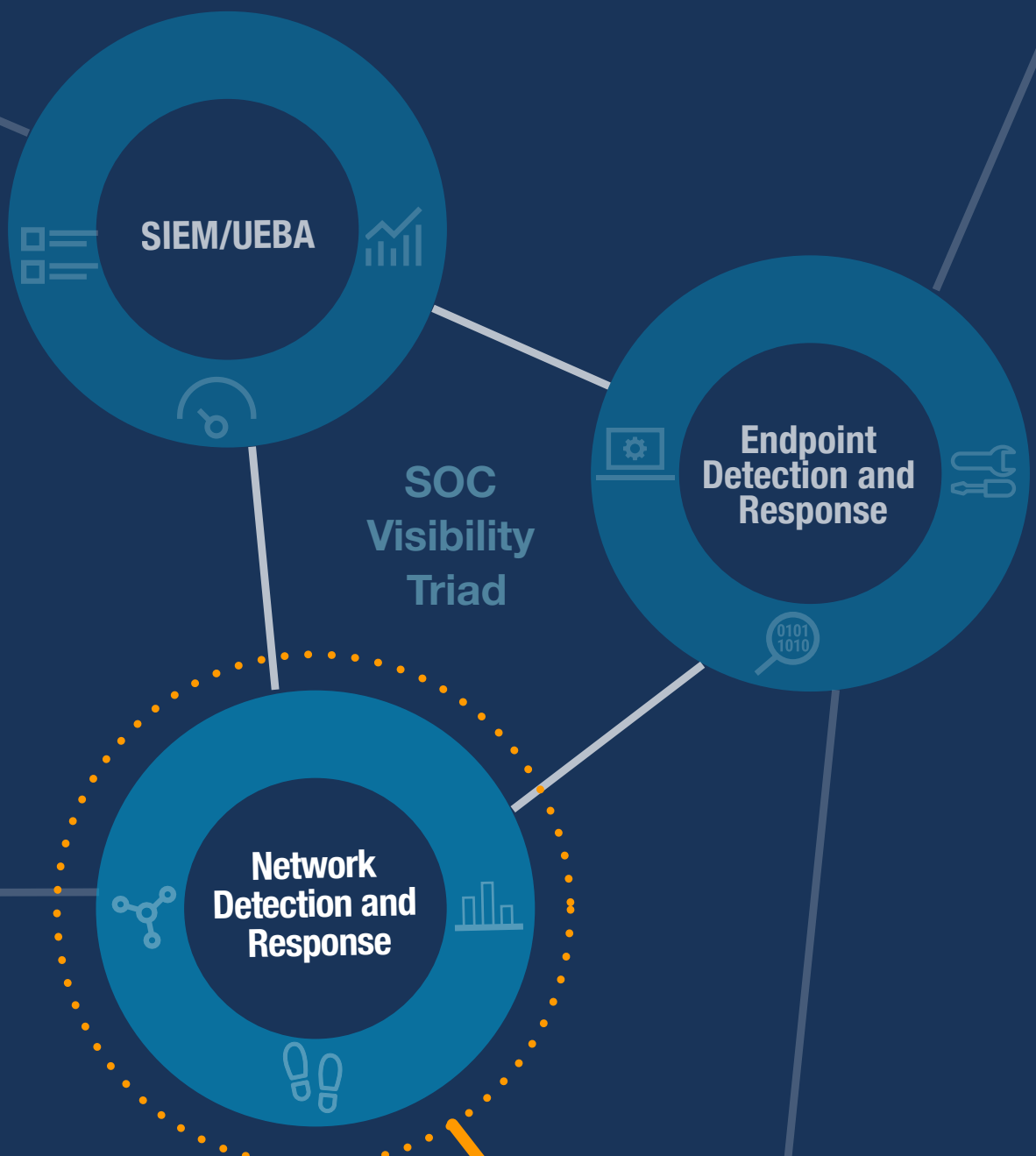


# Looking for the **R** in NDR?



Once you've detected a threat



you need to respond



Most NDR solutions noisily broadcast indiscriminate things to do.

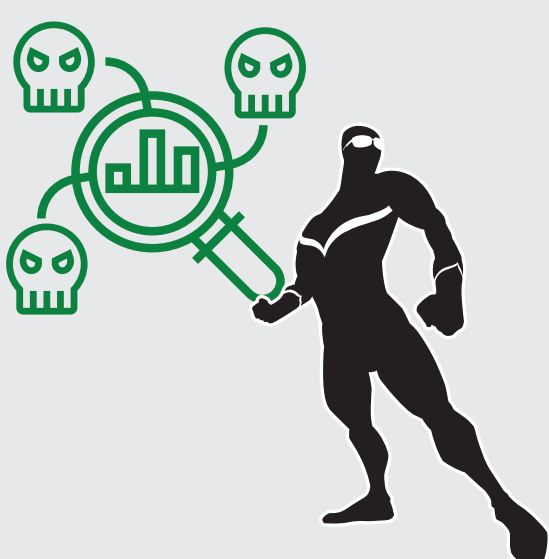
## At Vectra

Response

=

Intelligent Enforcement

### Enforce based on attacker behavior



NOT by thousands of anomalies that you have to sort through

### Enforce by account



NOT by shutting down the entire network

# Know what matters. Enforce what matters.

[Learn More](#)