

Guardian Sensors

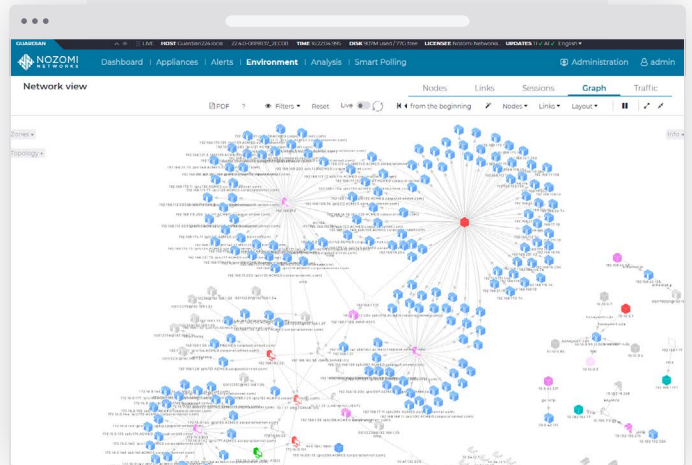
Automatically track your ICS, OT, IT and IoT/IIoT assets.

Whether you are a large enterprise or medium sized organization, Guardian sensors are available for a number of environments including on-premise, virtual and containers.

We offer multiple options for deployment:

- **Global Strategic Alliance Partners**
- **SI/VARs**
- **Professional Services**

Immediately see your entire network. Drill down for extensive node information including name, type, serial number, firmware version and components.



Real-time network visualization helps to quickly highlight issues.

Guardian Sensors for the Large Enterprise



NSG-HS Series

Rack-mounted sensors for real-time OT/IoT visibility, cybersecurity and monitoring.

- ◆ 300,000 - 500,000 Nodes
- ◆ 6 Gbps Max. Throughput



NSG-H Series

Rack-mounted sensors for real-time OT/IoT visibility, cybersecurity and monitoring.

- ◆ 100,000 - 200,000 Nodes
- ◆ 3 Gbps Max. Throughput

	NSG-HS 3500	NSG-HS 3000	NSG-H 2500	NSG-H 2000
Max. Protected Nodes	500,000	300,000	200,000	100,000
Max. Protected Network Elements¹	2,000,000	1,500,000	1,200,000	1,000,000
Max. Protected Smart IoT Devices²	3,000,000	1,800,000	1,200,000	600,000
Max. Throughput³	6 Gbps		3 Gbps	
Max. Remote Collectors⁴	50		50	
Monitoring Ports	Modular up to 16+1		Modular up to 8+1	
Management Ports	1x1000BASE-T		1x1000BASE-T	
Expansion Slots	4 slots available: 4x1000BASE-T 4xSFP 4xSFP+		2 slots available: 4x1000BASE-T 4xSFP 4xSFP+	
Storage	512 GB for OS and Data		512 GB for OS and Data	
Form Factor	1 rack unit		1 rack unit	
Max. Power Consumption	750 W		750 W	
Power Supply	Dual 100-240V AC 36 - 72V DC		Dual 100-240V AC 36 - 72V DC	
Temperature Range (°F/°C)	32 - 104 / 0 - 40		32 - 104 / 0 - 40	
HxWxL (mm/in)	1.73 x 17.24 x 23.60 / 44 x 438 x 600		1.73 x 17.24 x 23.60 / 44 x 438 x 600	
Weight (lb/kg)	39.68 / 18		37.47 / 17	
Certifications	CE, FCC, UL		CE, FCC, UL	

¹ Network Elements: The sum of nodes, links, and variables. ² Smart IoT Devices: The concept of "Smart IoT device" covers devices communicating in an intermittent way and resulting in low throughput. ³ All performance values are "up to" and vary depending on the analyzed traffic. ⁴ See Remote Collector tech specs for more details. For complete and current tech specs, visit: nozominetworks.com/techspecs, or contact us.

Guardian Sensors for the Mid-Enterprise



NSG-M Series

Rack-mounted sensors for real-time OT/IoT visibility, cybersecurity and monitoring.

- ◆ 10,000 - 40,000 Nodes
- ◆ 1 Gbps Max. Throughput

	NSG-M 1000	NSG-M 750
Max. Protected Nodes	40,000	10,000
Max. Protected Network Elements¹	600,000	200,000
Max. Protected Smart IoT Devices²	200,000	50,000
Max. Throughput³	1 Gbps	
Max. Remote Collectors⁴	50	
Monitoring Ports	7x1000BASE-T + 4xSFP	
Management Ports	1x1000BASE-T	
Expansion Slots	1 slot available: 4 x 1000BASE-T 4 x SFP 4 x SFP+	
Storage	256 GB for OS and Data	
Form Factor	1 rack unit	
Max. Power Consumption	360W	
Power Supply	Single 100 - 240V AC	
Temperature Range (°F/°C)	0 - 113 / 0 - 45	
HxWxL (in/mm)	1.73 x 17.24 x 16.89 / 44 x 438 x 429	
Weight (lb/kg)	30.8 / 14	
Certifications	CE, FCC, UL	

¹ Network Elements: The sum of nodes, links, and variables. ² Smart IoT Devices: The concept of "Smart IoT device" covers devices communicating in an intermittent way and resulting in low throughput. ³ All performance values are "up to" and vary depending on the analyzed traffic. ⁴ See Remote Collector tech specs for more details. For complete and current tech specs, visit: nozominetworks.com/techspecs, or contact us.

Guardian Sensors for the Mid-Enterprise



NS20 Series

Rack-mounted sensors for real-time OT/IoT visibility, cybersecurity and monitoring.

- ◆ 10,000 - 40,000 Nodes
- ◆ 1 Gbps Max. Throughput



NS1 Series

Rack-mounted sensor for real-time OT/IoT visibility, cybersecurity and monitoring.

- ◆ 1,000 - 5,000 Nodes
- ◆ 500 Mbps Throughput

	NS20 1000	NS20 750	NS1 250	NS1 100
Max. Protected Nodes	40,000	10,000	5,000	1,000
Max. Protected Network Elements¹	600,000	200,000	90,000	20,000
Max. Protected Smart IoT Devices²	200,000	50,000	20,000	5,000
Max. Throughput³	1 Gbps		500 Mbps	
Max. Remote Collectors⁴	50		50	
Monitoring Ports	9x1000BASE-T + 4xSFP		7x1000BASE-T	
Management Ports	1x1000BASE-T		1x1000BASE-T	
Expansion Slots	2 slots available 4x1000BASE-T 4xSFP 4xSFP+		1 slot available 4x1000BASE-T 4xSFP	
Storage	32GB for OS 2 x 256GB for Data (RAID 1)		128 GB for OS and Data	
Form Factor	1 rack unit		1 rack unit	
Max. Power Consumption	300W		220W	
Power Supply	Dual 100 - 240V AC		Single 100 - 240V AC	
Temperature Range (°F/°C)	32 - 104 / 0 - 40		32 - 104 / 0 - 40	
HxWxL (in/mm)	1.73 x 17.3 x 19.74 / 44 x 438 x 501		1.75 x 17.3 x 12.7 / 44 x 438 x 321	
Weight (lb/kg)	36.37 / 16.5		19.4 / 8.8	
Certifications	CE, FCC, UL, CB		CE, FCC, UL, CB	

¹ Network Elements: The sum of nodes, links, and variables. ² Smart IoT Devices: The concept of "Smart IoT device" covers devices communicating in an intermittent way and resulting in low throughput. ³ All performance values are "up to" and vary depending on the analyzed traffic. ⁴ See Remote Collector tech specs for more details. For complete and current tech specs, visit: nozominetworks.com/techspecs, or contact us.

Guardian Sensors for Specialized Requirements



Ruggedized Series

Ruggedized sensors for real-time OT/IoT visibility, cybersecurity and monitoring.

- ◆ 500 - 5,000 Nodes
- ◆ 100 - 250 Mbps Max. Throughput



Portable

Portable sensor for real-time OT/IoT visibility, cybersecurity and monitoring.

- ◆ 2,500 Nodes
- ◆ 200 Mbps Max. Throughput

	NG-500R	NSG-R 50	P550
Max. Protected Nodes	5,000	500	2,500
Max. Protected Network Elements¹	80,000	10,000	50,000
Max. Protected Smart IoT Devices²	30,000	2,500	12,500
Max. Throughput³	800 Mbps	100 Mbps	200 Mbps
Max. Remote Collectors⁴	30	10	Not available
Monitoring Ports	3x1000BASE-T	4x1000BASE-T	5x1000BASE-T
Management Ports	1x1000BASE-T		1x1000BASE-T
Expansion Slots	2 slots available: 4 x 1000BASE-T 4 x SFP	Not available	Not available
Storage	32GB for OS 2 x 256GB for Data (RAID 1)	64 GB for OS and Data	256 GB for OS and Data
Form Factor	3 rack unit	DIN mountable	Desktop with wall mount kit
Max. Power Consumption	115W	60W	38W
Power Supply	Dual 100 - 240V AC 16.6 - 160V DC	Single (External) 100 - 240V AC or 12 - 36V DC	Single (External) 90 - 240V AC or 12 - 30V DC
Temperature Range (°F/°C)	-40 -158 / -40 - 70 (Max 104 / 40 with SFP Expansion Module)	-40 - 167 / -40 - 75	32 - 140 / 0 - 60
HxWxL (in/mm)	5.18 x 17.2 x 11.8 / 132 x 438 x 300	3.15 x 5.11 x 5.74 / 80 x 130 x 146	2.75 x 7.08 x 9.44 / 70 x 180 x 240
Weight (lb/kg)	18.74 / 8.5	6.61 / 3	5.5 / 2.5
Certifications	CE, FCC, UL, CB	CE, FCC, UL	CE, FCC, UL

¹ Network Elements: The sum of nodes, links, and variables. ² Smart IoT Devices: The concept of "Smart IoT device" covers devices communicating in an intermittent way and resulting in low throughput. ³ All performance values are "up to" and vary depending on the analyzed traffic. ⁴ See Remote Collector tech specs for more details. For complete and current tech specs, visit: nozominetworks.com/techspecs, or contact us.

Guardian Sensors for Remote Sites



Remote Collector

Low-resource sensors that collect asset and network data in remote locations and send it to Guardian for further analysis.

◆ Up to 15 Mbps Throughput

	NRC-5
Max. Throughput	Up to 15 Mbps
Remote Collector Support	Not available
Monitoring Ports	2x1000BASE-T, 1xSFP
Management Ports	1x1000BASE-T
Expansion Slots	Not available
Storage	8 GB
Form Factor	DIN mountable
Max. Power Consumption	12W
Power Supply	Single (External PSU) 100-240VAC 12-36V DC
Temperature Range (°F/°C)	-40 - 158 / -40 - 70
Heat Generation	55.44 BTU/hr
HxWxL (in/mm)	3.07 x 6.67 x 5.00 / 78 x 146 x 127
Weight (lb/kg)	2.64 / 1.2
Compliance	RoHS
Certifications	CE, FCC, UL
	Virtual Remote Collector
Max. Throughput	15 Mbps
Deployment Options	VMware, Hyper-V, KVM, and XEN

For complete and current tech specs, visit: nozominetworks.com/techspecs, or contact us.

Guardian Sensors for Virtual Environments and Containers

Virtual Series

Virtual sensors for real-time OT/IoT visibility, cybersecurity and monitoring.

- ◆ 1,000 - 40,000 Nodes
- ◆ 1 Gbps Max. Throughput

	V1000	V750	V250	V100
Max. Protected Nodes	40,000	10,000	5,000	1,000
Max. Protected Network Elements¹	600,000	200,000	90,000	20,000
Max. Protected Smart IoT Devices²	200,000	50,000	20,000	5,000
Max. Throughput³	1 Gbps	1 Gbps	1 Gbps	1 Gbps
Scenarios	Enterprise	Large	Medium	Small
Deployment Options	VMware, Hyper-V, KVM, and XEN			
Max. Remote Collectors⁴	50	50	20	20

¹ Network Elements: The sum of nodes, links, and variables. ² Smart IoT Devices: The concept of "Smart IoT device" covers devices communicating in an intermittent way and resulting in low throughput. ³ Performance is dependent upon hardware configuration and resource allocation. ⁴ See Remote Collector tech specs for more details. For complete and current tech specs, visit: nozominetworks.com/techspecs, or contact us.

Container Edition

Embedded container sensor for switches, routers and other security infrastructure. Fast, flexible deployment option that leverage your existing devices.

- ◆ Available for Guardian with the Smart Polling add-on module only

	Container
Embedded Offerings	Gatewatcher, Siemens RUGGEDCOM
Add-ons	Smart Polling module: <i>included</i> Threat Intelligence and Asset Intelligence subscriptions: <i>can be added</i>
Remote Collector Support	Not available

For complete and current tech specs, visit: nozominetworks.com/techspecs, or contact us.

Nozomi Networks accelerates digital transformation by protecting the world's critical infrastructure, industrial and government organizations from cyber threats. Our solution delivers exceptional network and asset visibility, threat detection, and insights for OT and IoT environments. Customers rely on us to minimize risk and complexity while maximizing operational resilience.

